



Coppice Row, Theydon Bois, CM16

BUTLER & STAG



AVAILABLE on HELP TO BUY.

Chestnut Mews is a stunning new development occupying a prime position in the heart of Theydon Bois.



Leasehold

- New Build Development
- 250 Year Lease
- HELP TO BUY
- NHBC Warranty
- Allocated Parking
- En-Suite To Master Bedroom

Spanning just over 1070' sf of living space this stunning split level apartment offers a spacious and free flowing open plan lounge/kitchen diner, three double bedrooms with the luxury of one of the bedrooms having an en-suite bathrooms, with a separate cloakroom,

Externally, the property has a private block paved garden and also comes with allocated parking for one vehicle, with access to a bike shed.

Coppice Row is perhaps one of Theydon Bois' most sought after roads which contains some of the area's finest properties. It lies within easy reach of local amenities within the village. The village is arranged around the green, complete with duck pond and offers a parade of shops, several pubs and restaurants with access to Epping Forest. Transport links into London are excellent and there are several well regarded state and private schools within easy reach. Local leisure facilities include golf courses, sports centres and a tennis club.



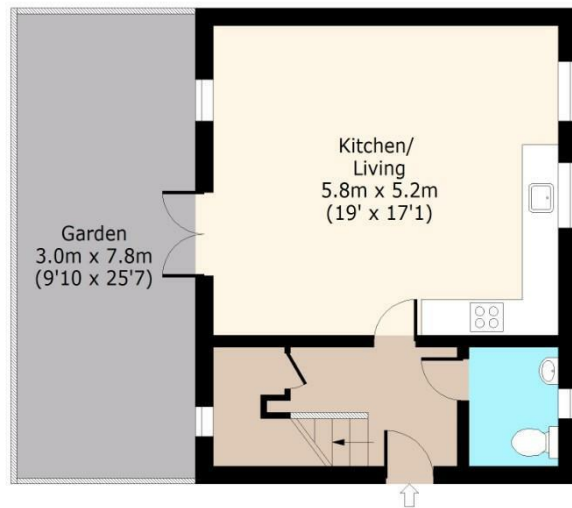


**Plot 7,
Chestnut Mews,**



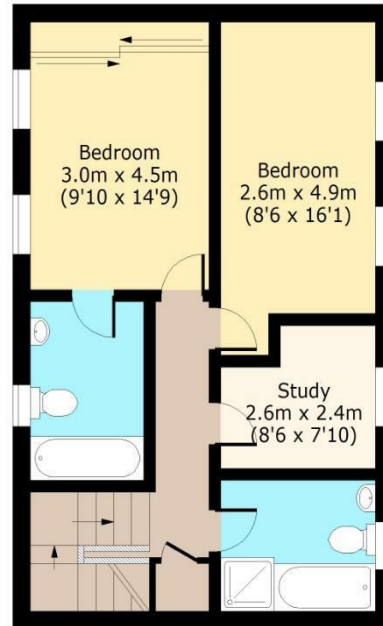
Ground Floor

Approx. 43 Sq. meters (463 Sq. feet)



First Floor

Approx. 57 Sq. meters (614 Sq. feet)



Total area: approx. 100 Sq. meters (1076 Sq. feet)
For illustration purposes only - not to scale

IMPORTANT NOTICE - These particulars have been prepared in good faith and they are not intended to constitute part of an offer or contract. We have not performed a structural survey on this property and the services, appliances and specific fittings have not been tested. All photographs, measurements, floor plans and distances referred to are given as a guide and should not be relied upon.

BUTLER & STAG

☎ 01992 667666

🏠 4 Forest Drive, Theydon Bois, Essex, CM16 7EY

✉ theydon@butlerandstag.com

www.butlerandstag.uk